

66 Ladder Cres, East Gwillimbury, ON

1st Floor Total Exterior Area 936.92 sq ft



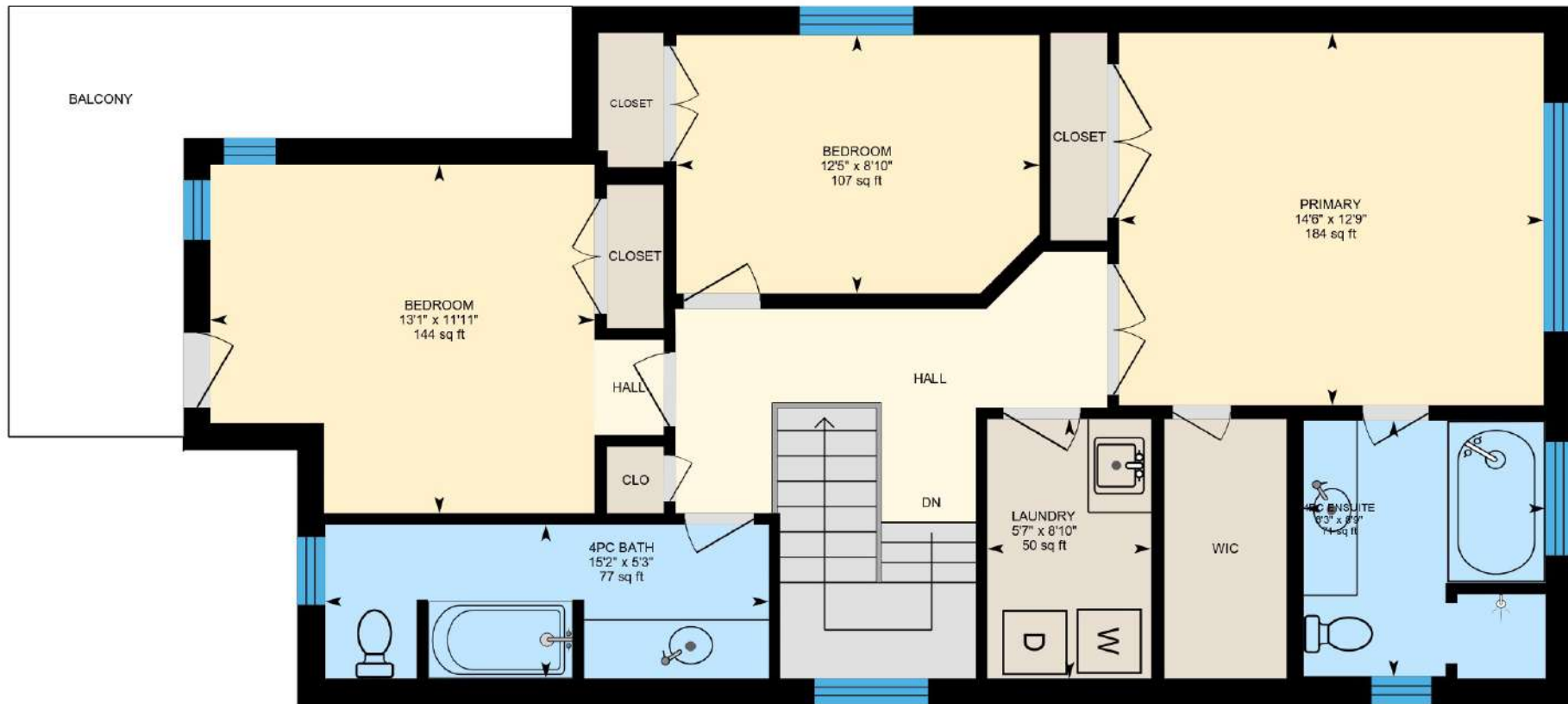
PREPARED: Jun 2021



White regions are excluded from total floor area in iGUIDE floor plans. All room dimensions and floor areas must be considered approximate and are subject to independent verification.

66 Ladder Cres, East Gwillimbury, ON

2nd Floor Total Exterior Area 1035.94 sq ft



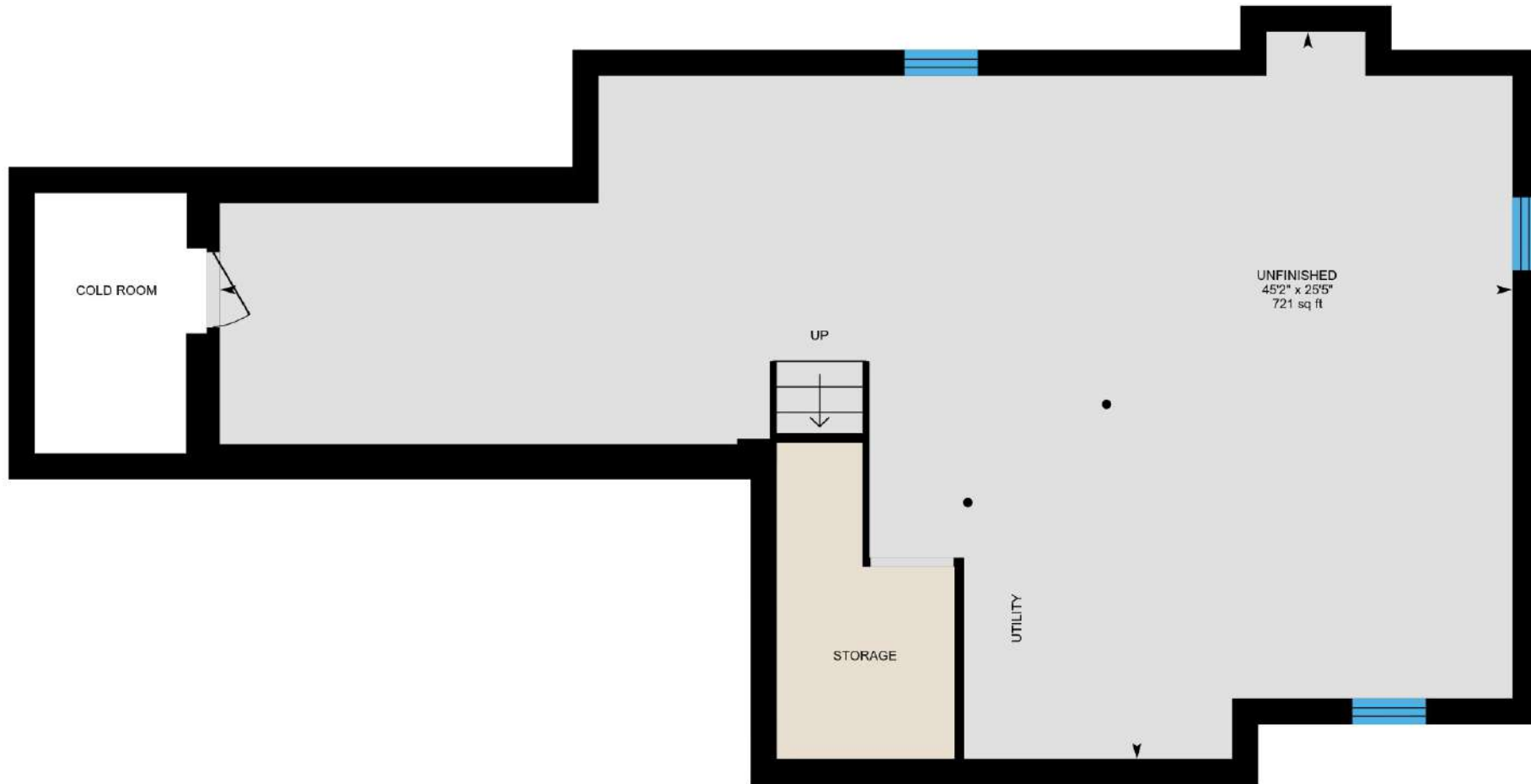
PREPARED: Jun 2021



White regions are excluded from total floor area in iGUIDE floor plans. All room dimensions and floor areas must be considered approximate and are subject to independent verification.

66 Ladder Cres, East Gwillimbury, ON

Basement Total Exterior Area 942.70 sq ft



PREPARED: Jun 2021

